



## **Electricians Recruit Apprentices**

The Westchester-Fairfield Joint Electrical Apprenticeship Training Committee (WFJEATC), Local Union #3 IBEW, will conduct a recruitment from September 15, 2023 through September 14, 2024 for 15 Electrician apprentices, the New York State Department of Labor announced today.

To request an application, email [wfjeatc@jibei.com](mailto:wfjeatc@jibei.com) from September 15, 2023 through September 14, 2024.

Completed applications must be mailed to WFJEATC, 200 Bloomingdale Road, White Plains, NY 10605 and **postmarked no later than September 14, 2024. There is a non-refundable application fee of \$25.** Please note, you may request that this fee be waived. Fee waivers will be approved upon showing verifiable proof of financial need.

The WFJEATC requires that applicants:

- Must be at least 18 years old.
- Must be a high school graduate or have a high school equivalency diploma such as a GED or TASC (issued by an appropriate State education authority). The diploma issued to the high school graduate must be from an accredited public or private school recognized by the New York State Education Department. Diplomas issued through a home study course and not by an appropriate educational authority are not acceptable. Must have successfully completed one year of algebra or one year of high school Regents Math. Proof of education and official transcript will be required.
- Must pass a medical examination, at the expense of the sponsor, after selection and prior to enrollment in apprenticeship.
- Must be a resident, for the past two years, within a 60-mile radius of White Plains, NY.
- Must have reliable means of transportation to and from various job sites and required classes at the approved school.
- Must possess a valid driver's license in order to operate company vehicles.
- Must take and pass the Electrical Trades Aptitude Test.

For further information, applicants should contact WFJEATC, Local Union #3 IBEW at (914) 946-0472. Additional job search assistance can be obtained at your local New York State Department of Labor Career Center (see: [dol.ny.gov/career-centers](http://dol.ny.gov/career-centers)).

Apprentice programs registered with the Department of Labor must meet standards established by the Commissioner. Under state law, sponsors of programs cannot discriminate against applicants because of race, creed, color, national origin, age, sex, disability, or marital status. Women and minorities are encouraged to submit applications for apprenticeship programs. Sponsors of programs are required to adopt affirmative action plans for the recruitment of women and minorities.

5-24-23

## APPRENTICESHIP INFO

Once the completed application is received, all applicants will be given an aptitude test. The aptitude test has two sections, Algebra & Functions and Reading Comprehension. Applicants must receive a minimum test score on the aptitude test to proceed in the application process. (Our national organization, which is called the Electrical Training Alliance, sells a test prep course via its website [ElectricPrep.com](http://ElectricPrep.com). There is a \$100 fee for the prep course.)

Applicants are then interviewed after they pass the aptitude test. After the aptitude test and interview, all applicants are ranked and placed on a hiring list which is monitored by the state DOL. The ranking score of an applicant is based on his/her aptitude test course (which accounts for 60% of the ranking score) and interview score (which accounts for 40% of the ranking score.) The number of apprentices taken into the apprentice program is based on the need for apprentices and at the discretion of the trustees of the apprentice program.

The apprentice program is 5.5 years and more than 9,000 hours of on-the-job training while working for affiliated contractors in Westchester County or western Fairfield County Connecticut. Apprentices work during the day and attend vocational school and college two nights a week in White Plains.

Presently the wages are: "

- \$16 an hour for first year apprentices
- \$17 an hour for second year apprentices
- \$19 an hour for third year apprentices
- \$21 an hour for fourth year apprentice
- \$26.50 an hour for the first 12 months of the fifth period.

- \$30 for the last 6 months of the fifth period.
- Journey workers currently make \$55.75 an hour.

Apprentices get at least 900 hours of classroom training, for which there is no fee. Apprentices are also required to attend Empire State College (ESC), which is part of SUNY, one night a week in White Plains. All apprentices receive an associate's degree after 4 years. ESC tuition is paid by the apprentice program.



e-mail: [dmecca@jibe.com](mailto:dmecca@jibe.com)

**DANIEL C. MECCA**  
**DIRECTOR OF APPRENTICE TRAINING**  
**WESTCHESTER FAIRFIELD JOINT ELECTRICAL**  
**APPRENTICESHIP TRAINING COMMITTEE**

200 Bloomingdale Road  
White Plains, NY 10605



(914) 946-0472  
Fax (914)-946-5497

## **Associates of Science Degree College Program**

A truly unique and outstanding aspect of the Joint Apprenticeship Training Program is the Associate Degree Program. Under the guidance of the Joint Industry Board of the Electrical Industry, the Apprenticeship Training Program in New York is the only one of its kind throughout the country that requires apprentices to earn an Associate Degree. IBEW Local Union No. 3 apprentices are able to gain a better understanding of the electrical industry as well as the labor movement and its importance to the nation. In order to obtain their degree, apprentices must complete 108 hours of college courses through the Harry Van Arsdale Jr. School for Labor Studies, Empire State College, the State University of New York.

## **College Tuition Reimbursement Program**

The goal of achieving higher education for eligible members of IBEW Local Union No. 3 is facilitated by the Educational & Cultural Fund of the Joint Industry Board through its College Tuition Reimbursement Plan. This plan gives members and their spouses an opportunity to pursue an education all the way through to a doctorate degree. Program participants are entitled to a lifetime reimbursement of up to \$25,000.00 each for members and spouses. Eligibility for this college tuition is effective after three years of employment with a contributing contractor.

## Sample Reading Comprehension

This test measures your ability to obtain information from written passages. You will be presented with a passage followed by a number of questions about it. A sample passage is shown below, followed by three sample questions. This passage is shorter than those on the actual test.

### Passage

The timing of New Year's Day has changed with customs and calendars. The Mayan civilization, on what is now called the Yucatan peninsula of Mexico, celebrated the New Year on one of the two days when the noonday sun is directly overhead. In the equatorial regions of the earth, between the Tropics of Cancer and Capricorn, the sun is in this position twice a year, once on its passage southward, and once on its passage northward. At the early Mayan city of Izapa in the southern Yucatan, the overhead date for the sun on its southward passage was August 13. The Mayans celebrated this as the date for the beginning of the New Year. Later at the more northerly Mayan site at Edzna, the corresponding overhead date is July 26. Analyses of Mayan pictorial calendars indicate that they celebrated the New Year on August 13 prior to 150 AD, and on July 26 after that year. This change has been explained by archaeological dating showing that 150 AD was the time that the Mayans moved the hub of their civilization from the southern to the northern site.

*III. Preparing for the Test*

---

6. According to the passage, the sun at Edzna was directly overhead at noon on:
- A. July 26 only
  - B. August 13 only
  - C. July 26 and one other date
  - D. August 13 and one other date
7. If the Mayans had moved their civilization's center south of Izapa, their new date for celebration of the New Year would probably have been closest to which of the following dates?
- A. January 1
  - B. February 20
  - C. March 25
  - D. September 15
8. Based on the information in the passage, which of the following statements is true?
- A. Mayans made Edzna the capital because it was more temperate than Izapa.
  - B. All Mayans moved to Edzna in 150 AD.
  - C. Mayans used calendars to mark the passage of time.
  - D. The Mayan city of Izapa was destroyed in 150 AD.

## Sample Algebra and Functions

This is a test of your ability to solve problems using algebra and associated mathematical functions. There are five (5) sample questions.

1. Consider the following formula:

$$A = B + 3(4 - C)$$

If B equals 5 and C equals 2, what is the value of A?

- A. 7
- B. 11
- C. 12
- D. 17

2. Consider the following formula:

$$y = 3(x + 5)(x - 2)$$

Which of the following formulas is equivalent to this one?

- A.  $y = 3x^2 + 9x - 30$
- B.  $y = x^2 + 3x - 10$
- C.  $y = 3x^2 + 3x - 10$
- D.  $y = 3x^2 + 3x - 30$

3. Consider the following pattern of numbers:

110, 112, 107, 109, 104

What is the next number in the pattern?

- A. 97
- B. 99
- C. 106
- D. 109

4. Consider the following formula:

$$a = \frac{1}{2}b - 4$$

Which of the following statements is true for this formula?

- A. When the value of  $b$  is less than 8,  $a$  is negative.
- B. When the value of  $b$  is greater than 8,  $a$  is negative.
- C. When the value of  $b$  is less than 8,  $a$  is positive.
- D. When the value of  $b$  is greater than 4,  $a$  is positive.



III. Preparing for the Test

---

5. Consider the following table:

<u>X</u>	<u>Y</u>
0	-5
1	-4
2	-3
3	-2
4	-1
5	0
6	1

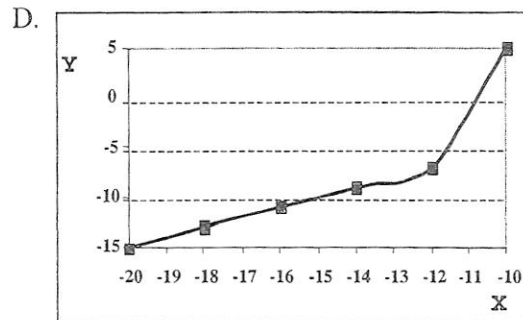
Which of the following choices represents the same relationship as demonstrated in this table?

A.

<u>X</u>	<u>Y</u>
10	-40
20	-30
30	-20
40	-10

B.  $Y = \frac{X}{2} - 5$

C. Y is equivalent to the difference between the value of X and a constant C, where C equals 5.



## SAMPLE TEST ANSWER KEY

### Algebra and Functions

1. B
2. A
3. C
4. A
5. C

### Reading Comprehension

6. C
7. D
8. C